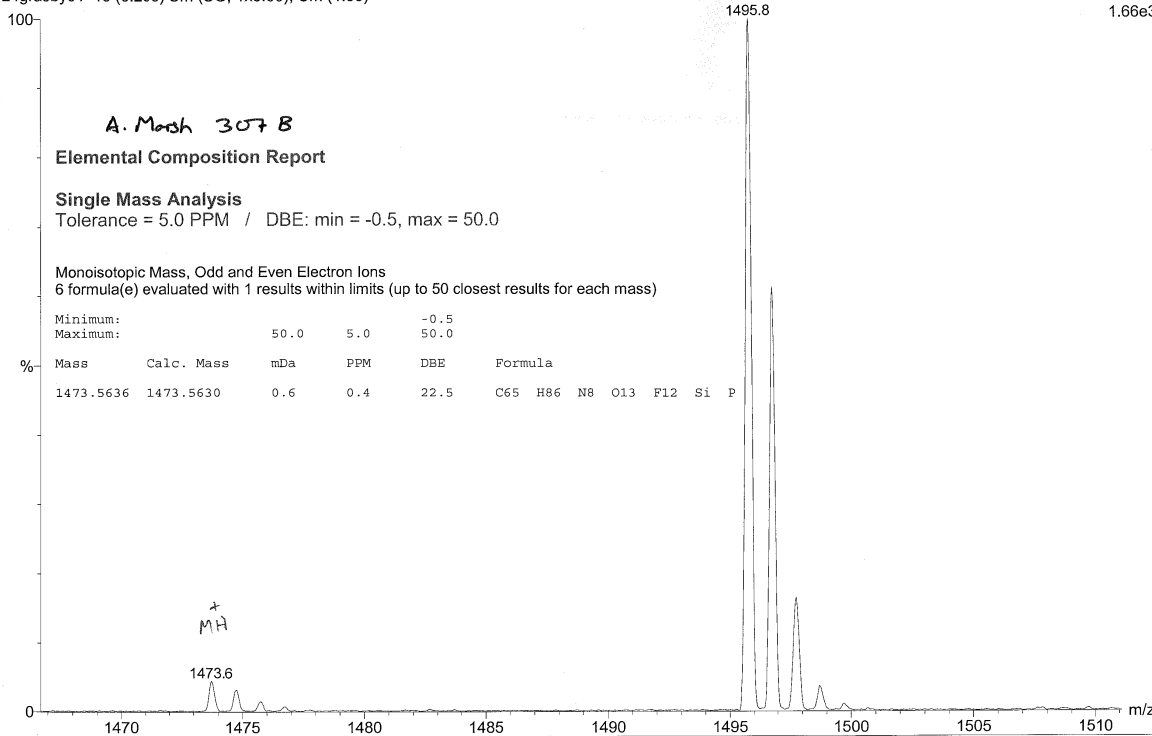


A. Marsh 307 B
24grasby01 15 (0.250) Sm (SG, 1x6.00); Cm (1:59)

11-JUN-2004
TOF MS ES+
1.66e3



A. Marsh 307 B
24grasby02 38 (0.633) Cm (4:58)

M⁻(-H)

11-Jun-2002
TOF MS ES-
2.45e3

